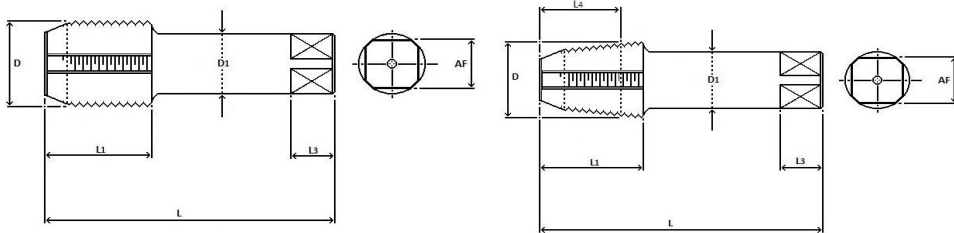


BS 949.3 TAP BLANK DIMENSIONS



Parallel threads (NPS, NPSF)

Tapered threads (NPT, NPTF)
(L4, length to gauge plane, on request).

ASME B94.9 TAP BLANK DIMENSIONS FOR AMERICAN PIPE THREADS NPT, NPTF, NPS, NPSF

THREAD SIZE"	THREADS PER INCH (TPI)	Dimensions in inches					NUMBER OF FLUTES	
		OVERALL LENGTH L	THREAD LENGTH L1	SHANK DIAMETER D1	SQUARE LENGTH L3	SQUARE A/F	STRAIGHT FLUTE ONLY	
							STANDARD THREAD	INTERRUPTED THREAD
1/16	27	2.13	0.69	0.3125	0.38	0.234	4	5
1/8	27	2.13	0.75	0.4375	0.38	0.328	4	5
1/4	18	2.44	1.06	0.5625	0.44	0.421	4	5
3/8	18	2.56	1.06	0.7000	0.50	0.531	4	5
1/2	14	3.13	1.38	0.6875	0.63	0.515	4	5
3/4	14	3.25	1.38	0.9063	0.69	0.679	5	5
1"	11.5	3.75	1.75	1.1250	0.81	0.843	5	5
1.1/4	11.5	4.00	1.75	1.3125	0.94	0.984	5	5
1.1/2	11.5	4.25	1.75	1.5000	1.00	1.125	7	7
2"	11.5	4.50	1.75	1.8750	1.13	1.406	7	7
2.1/2	8	5.50	2.56	1.2500	1.25	1.687	8	N/A
3"	8	6.00	2.63	2.6250	1.38	1.968	8	N/A